

CUSTOM DECALS + PLAQUES

Promote recycling, advertise or identify special installations. Custom designed decals are available for the lids, plaques and top steel bands of our receptacles. We have a complete graphic arts department to help you with regard to the design and implementation of custom decals and plaques. Custom plaques are made from heavy 20-gauge galvanized steel sheets cut to the appropriate size on which a specially prepared decal will be affixed. The plaques are then attached to the product. We also create intricate custom bronze plaques for our benches engraved with your personal message.

Choose from:

- Steel plaques in several sizes.
- Fitted outdoor decals carefully installed.
- Custom bronze plaques.

DECAL MATERIAL

3M's Scotchcal™ 220 outdoor premium grade pressure sensitive vinyl material.

- Digitally printed.
- Laminated with high-gloss, graffiti resistant film providing UV protection.
- Expected service life: 5-7 years.

3M's Scotchlite™ 280i reflective outdoor premium grade pressure sensitive vinyl material.

- Only available for bollards.
- Reflective material with a typical coefficient of retro reflection of 100 candelas.
- Digitally printed.
- Laminated with high-gloss, graffiti resistant film providing UV protection.
- Expected service life: 5-7 years.

Installations vary with climate, temperature and abuse. Please contact Victor Stanley for the standard limited warranty.



SD-42. Custom oversized canopy dome lids. Custom plaque decals. Atlanta, Georgia, USA.

Create a timeless moment.®

BRONZE PLAQUES

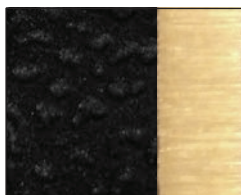
Victor Stanley offers a solid bronze plaque that is 4 x 6 inches and is 1/4 inch thick. The plaque may have up to 4 lines of text with 14 characters per line. We provide a double border and a choice of black, bronze or dark green for the background. The text is in a brushed bronze finish and uses the font New Brunswick.



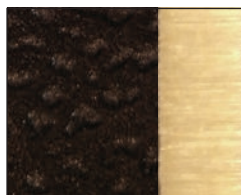
OPTION INFORMATION SHEET

Use the form below to design your custom bronze plaque.

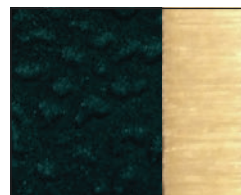
VICTOR STANLEY													
TEMPLATE													



Black



Bronze



Dark Green



Create a timeless moment.®

ARTWORK SUBMISSION INFORMATION

DIGITAL ARTWORK

Getting the digital artwork to us

1. E-mail: artwork@victorstanley.com (Please reference the project name and Cc: your Customer Service Representative or Sales Representative)
2. CD (Compact Disc)

Vector based artwork is preferred

Most professionally created artwork is drawn on the computer using vector-based programs such as Adobe Illustrator. We can accept the following vector based formats:

1. Native file formats from Adobe Illustrator.
2. EPS (Encapsulated Post Script) scalable / working files
3. If you are not sure what file types you have please send them anyway and we will research them to find out if they are workable.

FONTS: Although we have many fonts to work with, kerning pairs and kerning width tables vary. Please include fonts with artwork or convert all text to outlines.

Bit mapped or raster images

We can work with raster based artwork such as JPG or TIFF but we must then recreate the artwork. Converting/recreating raster to vector is extremely time consuming. Depending on the artwork, the Graphic Arts Department might only be able to produce passable results. **The file must be set for high-resolution output 300 DPI.**

What is the difference between *raster* and *vector* formatted graphics?

Raster graphics are composed of a matrix of pixels (i.e., a rectangle comprised of rows and columns of dots). Each pixel/dot is assigned a particular color value. They are generally used for digitized photographs, screen captures, computer simulations, ray-traced images, scanned images and similar artwork. If bitmap graphics are scaled, rows and columns are added or deleted, which can make the resulting image jagged and unattractive. High-resolution bitmap graphics can overcome this problem, but they can require very large amounts of hard disk space to store and RAM to display and print.

Vector format graphics, on the other hand, are made up of mathematical descriptions of all the objects that comprise an image. They are usually very high quality and use the maximum resolution of the output device (e.g., display monitor, printer, etc.). They can be scaled with little or no loss of quality.

PAPER MEDIA

If digital artwork cannot be supplied please provide a printed piece with the artwork depicted as large as possible. In most cases it is extremely difficult to recreate the artwork from letterheads and or business cards.

Mail the artwork to us at:

Victor Stanley
Attention: Graphic Arts Department
P.O. Drawer 330
Dunkirk, MD 20754



Create a timeless moment.®

REMOVAL OF VINYL DECALS

CAUTION: Follow all manufactures' recommended procedures and safety recommendations when using such chemicals and or hardware. (*Ace® Hardware Turbo Cool™*, *Goo Gone®*, *Joy®* dishwashing detergent.) Consult instruction manuals, container labels and Material Safety Data Sheets for specific product information. *Heated metal stays hot long after heated do not handle without appropriate protection.*

REMOVING DECALS FROM RECEPTACLES AND PLAQUES

You will need a heat gun (recommend *Ace® Hardware Turbo Cool™*).

1. Set heat gun to approximately 600°F.
CAUTION: 600°F will harm powder coat finish if concentrated in one area. To avoid damage, keep the heat gun in constant motion by waving it back and forth.
2. Heat the decal surface for 20 seconds keeping the heat gun in constant motion. Do not stop or dwell in one spot.
CAUTION: Heated metal stays hot long after heated. Do not handle without appropriate protection! Wait until the decal surface is cool enough to handle, but still warm.
3. Start at corner of the decal and begin peeling away from surface at a 45° angle until entire decal is removed.
4. If the decal becomes difficult to peel then repeat steps 2-3.

REMOVING DECAL ADHESIVE FROM RECEPTACLES AND PLAQUES

You will need a soft lint-free cloth, and *Goo Gone®*. (Optimal temperature conditions for removal: 40 - 70°F)

1. Apply *Goo Gone®* on adhesive residue and let stand for 15 sec.
2. Wipe adhesive residue off surface using soft lint-free cloth.
3. Repeat steps 1-2 if necessary until all adhesive has been removed.
4. Clean surface using application formula below.

APPLICATION OF VINYL DECALS

APPLYING DECALS TO RECEPTACLES AND PLAQUES

You will need *Joy®* dishwashing detergent, water, spray bottle, squeegee and soft lint-free cloths. (Optimal temperature conditions for installation: between 40°F and 70°F.)

1. Application Solution: Add 1/3 teaspoon of *Joy®* dish washing detergent to 1 quart of water.
2. The decal must be applied to a clean surface. Wash the surface with application formula below and dry with a lint-free cloth before solution evaporates from the surface.
3. Empty contents of mixture into a spray bottle.
4. Remove label from backing and spray adhesive side with solution (this deactivates the adhesive to make the decal easier to reposition).
5. Apply the decal to the surface.
6. Squeegee surface of label to remove as much water or solution as possible (this will in theory reactivate the adhesive).
7. Let the decal stand (cure) for 24 hours.

CARE AND MAINTENANCE

The decal surface should be cleaned using a mild soap (with a pH of 3.0 to 11.0) and a soft cloth. Avoid grit, abrasives, strong solvents or alcohol.