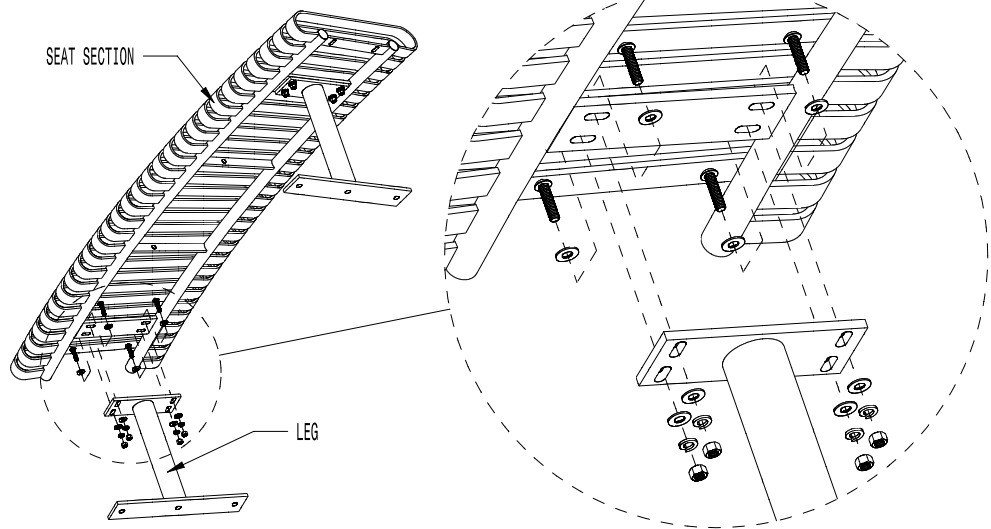
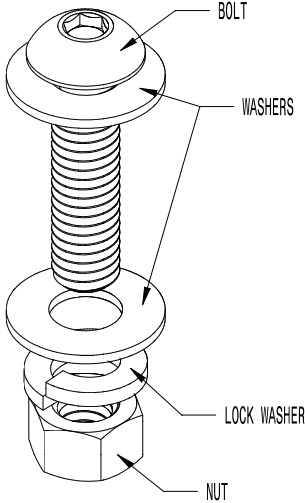


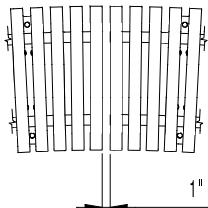
* ALL DIMENSIONS ARE IN INCHES *

- 1 - REMOVE ALL PARTS FROM THEIR BOXES AND BAGS. PLACE ON TOWELS OR A SOFT SURFACE TO PREVENT SCRATCHING.
- 2 - USING THE PROVIDED HARDWARE IN THE CONFIGURATION SHOWN, ATTACH (2) LEGS TO THE FIRST SEAT SECTION. HAND TIGHTEN ALL HARDWARE. **DO NOT FULLY TIGHTEN**
- 3 - REPEAT STEP 2 FOR THE SECOND SEAT SECTION. HAND TIGHTEN ALL HARDWARE. **DO NOT FULLY TIGHTEN**

HARDWARE CONFIGURATION

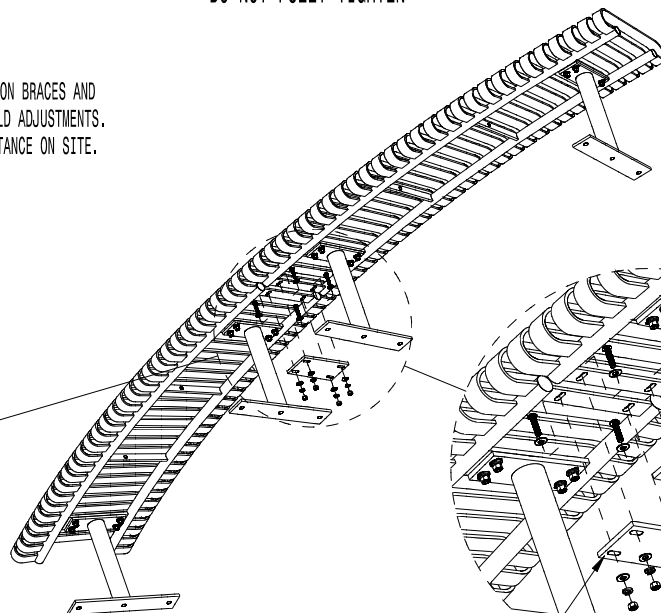
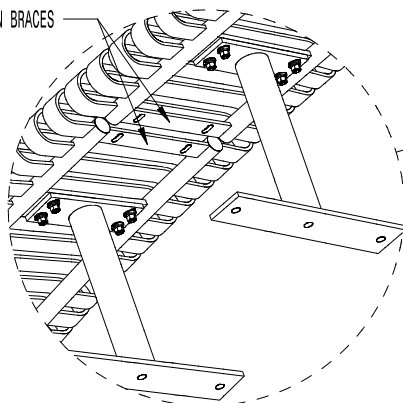


- 4 - ONCE LEGS ARE ATTACHED TO BOTH SEAT SECTIONS, ALIGN BENCHES SO THAT THE JUNCTION BRACES ARE SIDE BY SIDE WITH AN APPROXIMATE 1" GAP. ATTACH THE JUNCTION PLATE TO THE JUNCTION BRACES USING THE SAME HARDWARE CONFIGURATION. HAND TIGHTEN ALL HARDWARE. **DO NOT FULLY TIGHTEN**

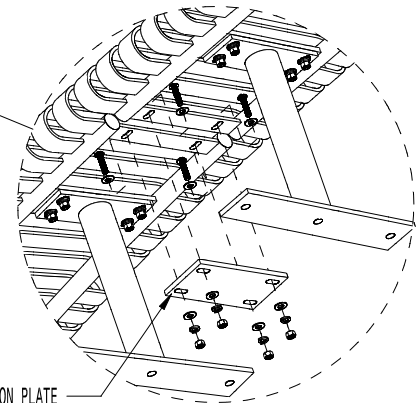


WARNING: JUNCTION BRACES AND PLATES ALLOW FIELD ADJUSTMENTS. CONFIRM GAP DISTANCE ON SITE.

JUNCTION BRACES



JUNCTION PLATE

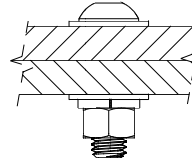
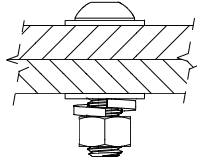


STEEL SLAT BENCH
 SHOWN: GENERAL ASSEMBLY INSTRUCTIONS
 STANDARD 12-FOOT LENGTH [(2) 6-FOOT LENGTH BENCH SECTIONS]

* ALL DIMENSIONS ARE IN INCHES *

5 - ONCE THE BENCH IS FULLY ASSEMBLED, MAKE SURE EVERYTHING IS PROPERLY SPACED AND ALIGNED. TOOL TIGHTEN ALL HARDWARE. BOLTS SHOULD BE TIGHTENED UNTIL LOCK WASHERS COMPRESS (AS SHOWN).

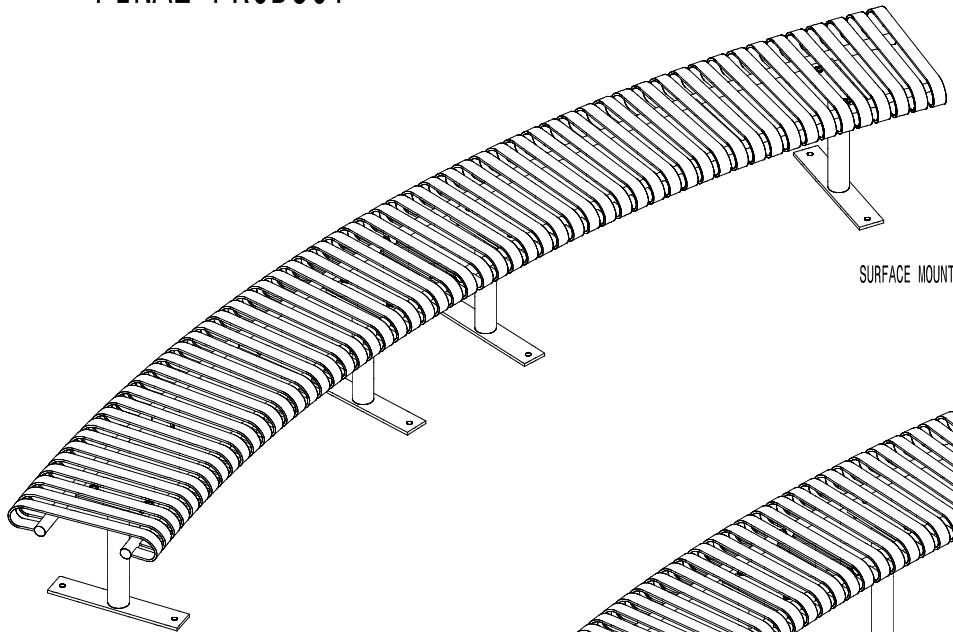
BOLT & FASTENER
BEFORE TOOL TIGHTENING



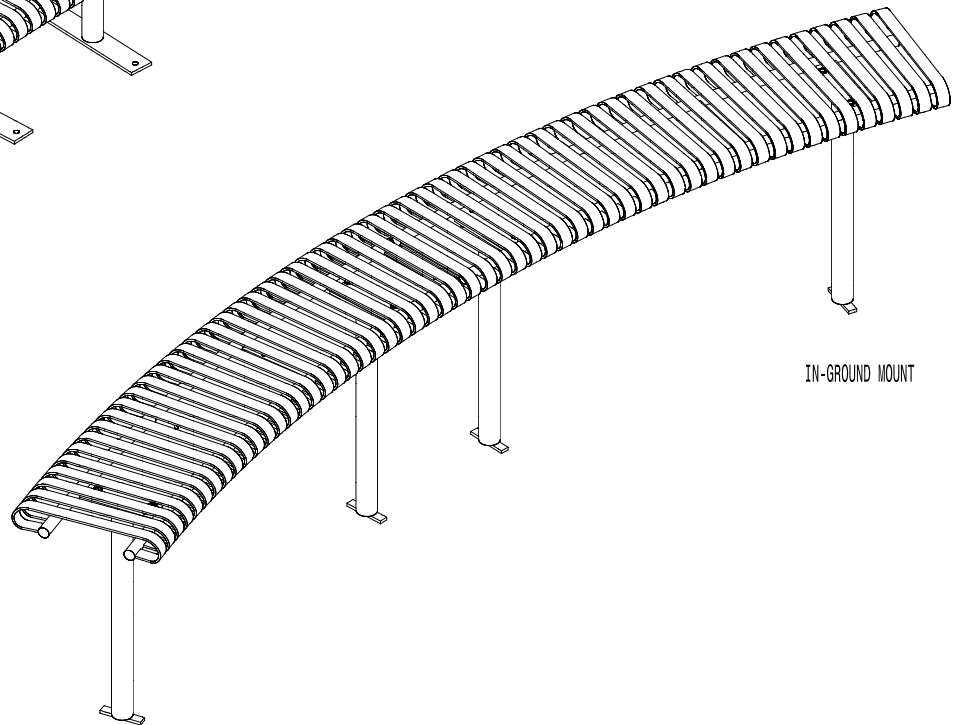
BOLT & FASTENER
AFTER TOOL TIGHTENING

DO NOT OVER TIGHTEN.

FINAL PRODUCT



SURFACE MOUNT



IN-GROUND MOUNT



FRB-2
STEELSITES™

STEEL SLAT BENCH
 SHOWN: GENERAL ASSEMBLY INSTRUCTIONS
 STANDARD 12-FOOT LENGTH [(2) 6-FOOT LENGTH BENCH SECTIONS]