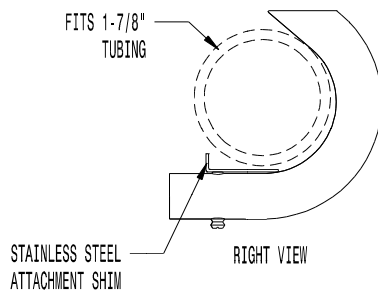




VICTOR STANLEY, INC.®
-Manufacturers of Quality Site Furnishings since 1962-

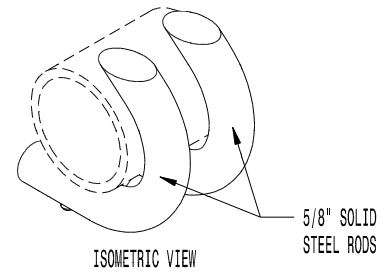
P.O. DRAWER 330 - DUNKIRK, MD 20754 USA
TOLL FREE: (800) 368-2573 (USA & CANADA)
TEL (301) 855-8300 - FAX (410) 257-7579
WEB SITE: HTTP://WWW.VICTORSTANLEY.COM

* ALL DIMENSIONS ARE IN INCHES *

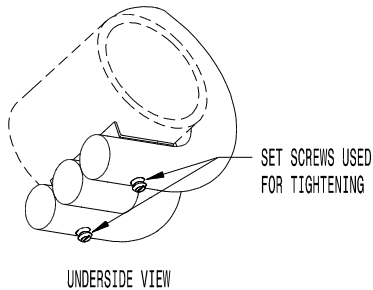


RIGHT VIEW

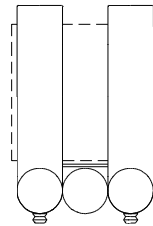
PATENTS PENDING



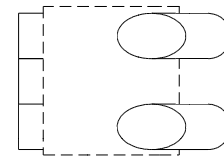
ISOMETRIC VIEW



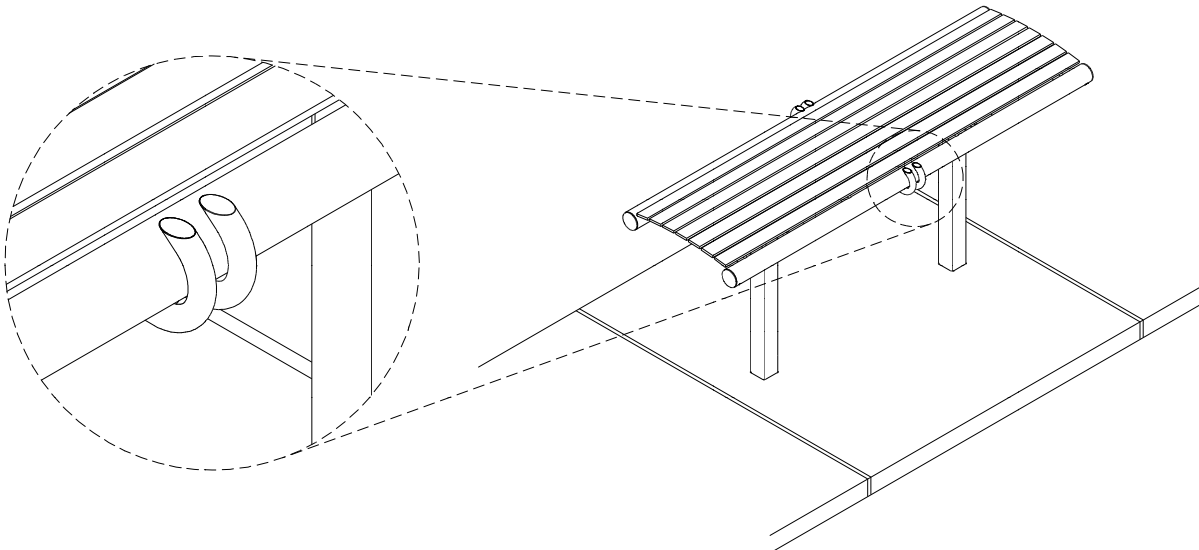
UNDERSIDE VIEW



TOP VIEW



FRONT VIEW



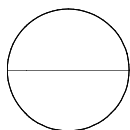
AVAILABLE OPTIONS:

POWDER COATING

12 STANDARD COLORS, CUSTOM COLORS (INCLUDING THE RAL RANGE)

NOTES:

1. DRAWINGS NOT TO SCALE. DO NOT SCALE DRAWINGS.
2. ALL FABRICATED METAL COMPONENTS ARE STEEL SHOTBLASTED, ETCHED, PHOSPHATIZED, PREHEATED, AND ELECTROSTATICALLY POWDER-COATED WITH T.G.I.C. POLYESTER POWDER COATINGS. PRODUCTS ARE FULLY CLEANED AND PRETREATED, PREHEATED AND COATED WHILE HOT TO FILL CREVICES AND BUILD COATING FILM. COATED PARTS ARE THEN FULLY CURED TO COATING MANUFACTURER'S SPECIFICATIONS. THE THICKNESS OF THE RESULTING FINISH AVERAGES 8-10 MILS (200-250 MICRONS).
3. ALL SPECIFICATIONS ARE SUBJECT TO CHANGE. CONTACT MANUFACTURER FOR DETAILS.



CUSTOM SKATEBOARD GUARD (PATENTS PENDING)

FOR SKATEBOARD RAIL SLIDE PREVENTION AND BENCH ACCESSORY ATTACHMENT
ON STEEL TUBULAR FRAMED BENCHES